

CORP. LINE

1/2 SECTION LINE

**SCOTT**  
BLUE CREEK TOWNSHIP  
SECTION 36

**N**

SCALE 1" = 300 FT.

**AUTUMN RIDGE  
FARMS, LLC**

41.68 A.

FORMER  
OUTLOTS (5,9,10,11,12,13,14,15,16,17,18,19,20,&23)

CHARLES  
MOSIER  
25.598 A.

CORP. LINE

**AUTUMN RIDGE  
FARMS, LLC**

69.854 A.

(21)  
VILLAGE  
OF  
SCOTT  
1.00A.

(23)  
ROY  
NOGGLE

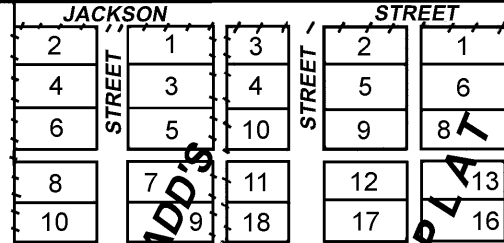
(6)  
BENJAMIN &  
MARIE BYLER  
1.95 A.

(PT. 7, 8)  
B.B.  
.476 A.  
(PT 7,8)  
A.P.

(24)  
DENNIS  
BOROFF  
.50 A.

(24)  
DAVID  
BUTLER  
.50 A.

(2)  
BRUCE  
FLEMING  
4.70 A.



(4)  
MARY  
KREISCHER  
1.25 A.

(3)  
JASON  
KREISCHER  
1.48 A.

VILLAGE OF SCOTT  
7.95 A.

R. AKOM  
.956 A.

04 WEST OHIO GAS CO.

(3)  
A.S.  
.329

(3)  
B.M.

(1)  
B.M.

(1)  
.367  
M.B.

32  
31

16  
18

15  
17

27  
34

30  
29

20  
22

19  
21

35  
42

36  
41

37  
40

39  
49

43  
44

45  
46

47  
48

28  
27

26  
25

24  
23

43  
44

45  
46

47  
48

49  
50

1/2 SECTION LINE  
VILLAGE OF SCOTT  
4.679 A.

SCOTT EQUITY EXCHANGE  
1.903 A.

CORP. LINE

BLAINE STREET

BLAINE STREET

SOUTH 1/4 POST SECTION 36  
BLUE CREEK TOWNSHIP,  
PAULDING COUNTY

VAN WERT COUNTY