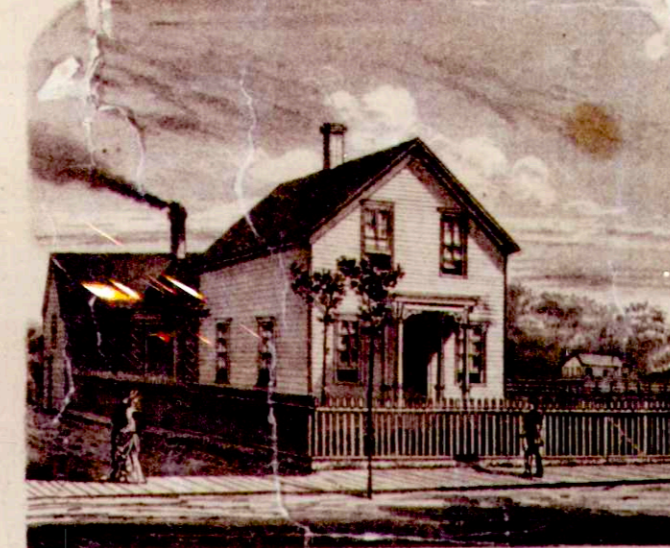


PAULDING COUNTY JAIL.



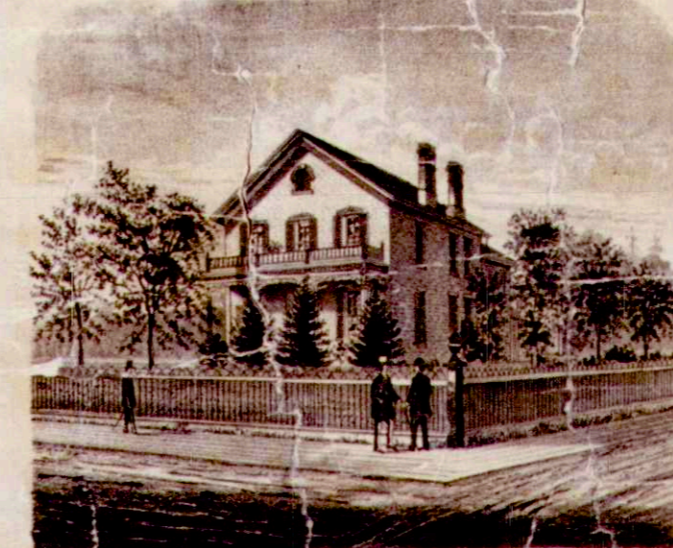
UNION SCHOOL ANTWERP.



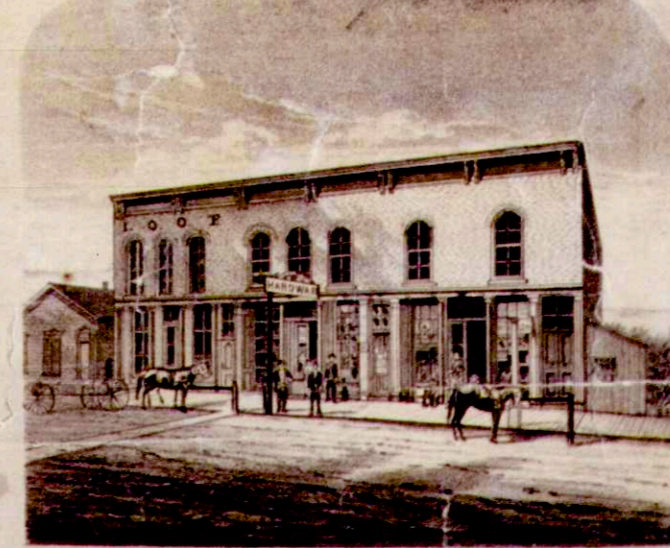
RES. OF W.A. STRONG, PAULDING.



M.E. CHURCH PAULDING.



RES. OF HENRY GEORGE, ANTWERP.



GORDON BLOCK ANTWERP.

MAP OF PAULDING COUNTY OHIO

Drawn and Compiled BY **W.A. STRONG,** PAULDING OHIO 1878.

Scale 2 Inches to the Mile.

